

S3 Series Spring Feeder

Super spring storm



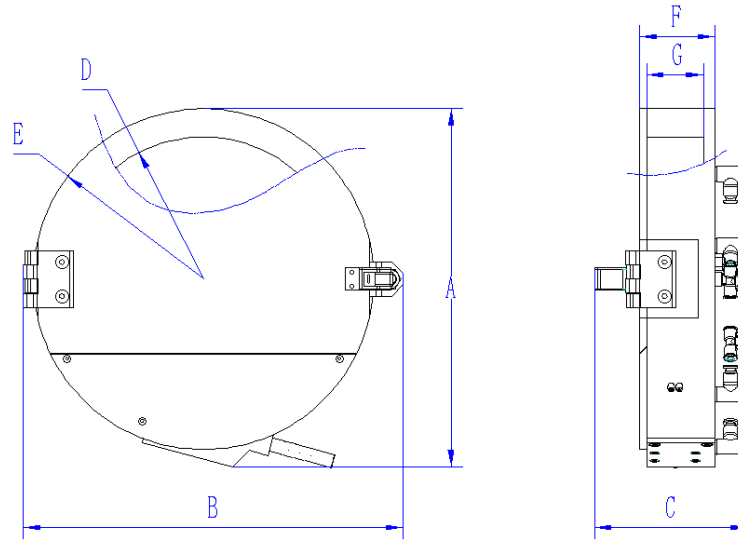
The unique design was developed for components requiring extra gentle detangling methods coupled with high output rates. These feeders can run unattended after loading of parts, freeing up valuable operator time to perform other tasks. They can be integrated to other process equipment as needed.

The transparent PC viewing window gives unparalleled access to the detangling of parts while in process! Springs are fed out onto a track or can be dispensed by an optional dispenser designed to feed your specific spring. The S3 series spring feeder operates very quietly and requires only clean dry air and 220vac to operate.

THE ADVANTAGES AT A GLANCE

- Detangles and orients springs end to end
- No moving parts in detangler!
- Extremely reliable with proper maintenance
- Compact self contained, can be installed on most machines
- Remote feed tube for spring delivery
- Pneumatically powered, very gentle and does not damage springs
- Easy viewing window to aid in operation (fill level, operation, etc.)
- Built-in tangled spring clearing at tube inlet
- Lowest operating cost due to labor savings
- Customizable to meet other spring sizes

Technical data



Parameters	S3-1	S3-2
A (mm)	355	355
B (mm)	300	300
C (mm)	121	202
D (mm)	250	250
E (mm)	300	300
F (mm)	66	122
G (mm)	50	50
Quantity of cavity	1	2
Outlet	1/2/3	1/2/3
Feeder rate (pcs/min)	Up to 80 pieces per min for one outlet, depends on spring OD 2 ~ 8mm, max. length 25mm, min wire diameter 0.10mm	
Spring capacities	Up to 80 pieces per min for one outlet, depends on spring OD 2 ~ 8mm, max. length 25mm, min wire diameter 0.10mm	

Optical accessories

➤ Spring Dispenser SEM series

- Depends on spring type, always provides the most dispenser
- Extremely reliable with proper maintenance
- Easy to observe the discharge state of spring

➤ Control unit

- Recommended configuration, reliable and efficient loading also depends on logic control
- Standard configuration is Siemens PLC



SEM 1010



SEM 1020



SEM 1030